

Water Electrolyzer Test Station

PEM



< Single Cell Test station >



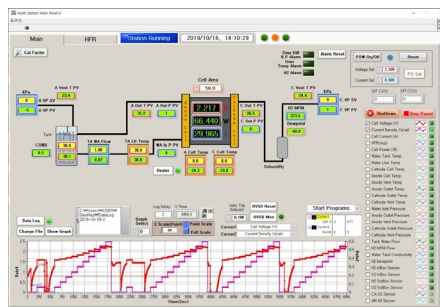
Specifications

Item	SE300 - PE	SE500 - PE	SE1K - PE	SE3K - PE	SE5K - PE	SE10K - PE	SE30K - PE	SE50K - PE	SE100K - PE	SE200K - PE	
Test Rate	300W	500W	1kW	3kW	5kW	10kW	30kW	50kW	100kW	200kW	
Station Dimension (mm)	600 X 1100 X 2000		800 X 1300 X 2000		1100 X 1800 X 2000		1400 X 2200 X 2000		1500 X 3000 X 2200	1800 X 4000 X 2200	
Gas Flow Measure	H ₂ Flow (slpm)	1	2	5	15	25	50	150	250	500	1000
	O ₂ Flow (slpm)	0.5	1	2.5	7.5	12	25	75	125	250	500
	MFM Range	Measuring Range : Turndown 100:1									
N ₂ Purge	Auto N ₂ Purge MFC : Anode, Cathode										
Electrolyte Circulation (Anode)	DI Water Temperature Control : RT ~95°C, DI Water Level Control & Alarm, Auto Fill, Water Conductivity Monitoring DI Water & Gas Separation DI Water Flow Control (Pump & Flow Meter), Water Filtering (micro & ion)										
Gas Cooling	Gas cooling and Trap(Condensation liquid & gas separation)										
Dryer, Gas Filter	Dryer(Moisture Absorb Filter) & Dewpoint Monitoring, or other type Gas Filter										
Concentration Sensor	H ₂ in O ₂	0-5%, 10% Vol									
	O ₂ in H ₂	0-5%, 10% Vol									
Back Pressure Control	Auto Back Pressure Control, 10Bar, 30Bar(option)										
Cell voltage Monitoring	Nominated Channel, ±5V/CH										
AC-Impedance(Optional)	Single Cell AC-Impedance, HFR, Multi Channel HFR measurement, 10mHz~10kHz										

Software



Variable & Usable Testing Programs
Optimizing Multi Function Software



Scitech Korea